

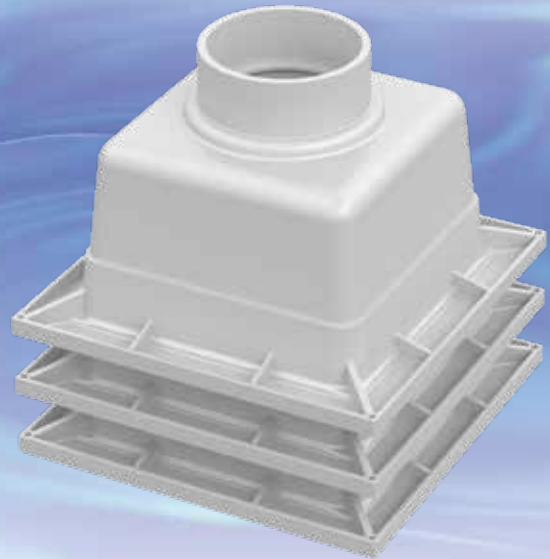
Smith Light Commercial PVCeptor[®] Reservoir Dog[™] SANITARY FLOOR SINK

Recommended Uses:

- Restaurants
- Cafeterias
- Supermarkets
- Dairies
- Food Processing Plants



FIG. # 305



Stackable to maximize
shelf space

Features and Benefits:

- PVC offers excellent resistance to chemicals—will not chip, rust or corrode
- Easy to handle, easy to install
- Smooth, uniform interior pitched surfaces allow for easy cleaning—no standing water
- Grates: PVC, Acid Resistant Coated Cast Iron or Nickel Bronze for a variety of specifications
- Material tests show NO distortion from water temperature up to 200 degree F
- IAPMO Listed, File No. 2695

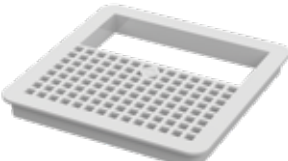
PVCeptor[®] Reservoir Dog[™]

SANITARY FLOOR SINK

PVC Grates



305-10
Full Grate



305-12
Half-Grate



305-13
Three-Quarter Grate

-ARCIG, Acid Resistant Coated Cast Iron Grates



305-10ARCIG
Full Grate



305-12ARCIG
Half-Grate



305-13ARCIG
Three-Quarter Grate

Nickel Bronze Grates



305-10NB
Full Grate



305-12NB
Half-Grate



305-13NB
Three-Quarter Grate

BOTTOM STRAINERS/BUCKETS

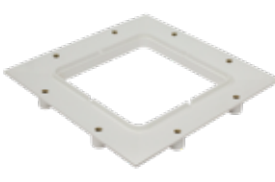


305-14

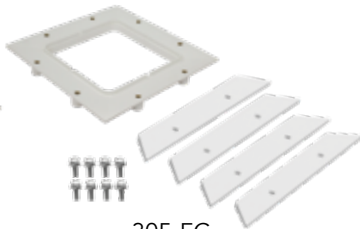


305-15

ANCHOR FLANGE/FLASHING CLAMP



305-F



305-FC



A Product of:
JAY R. SMITH MFG. CO.[®]
DIVISION OF SMITH INDUSTRIES, INC.
www.jrsmith.com

